

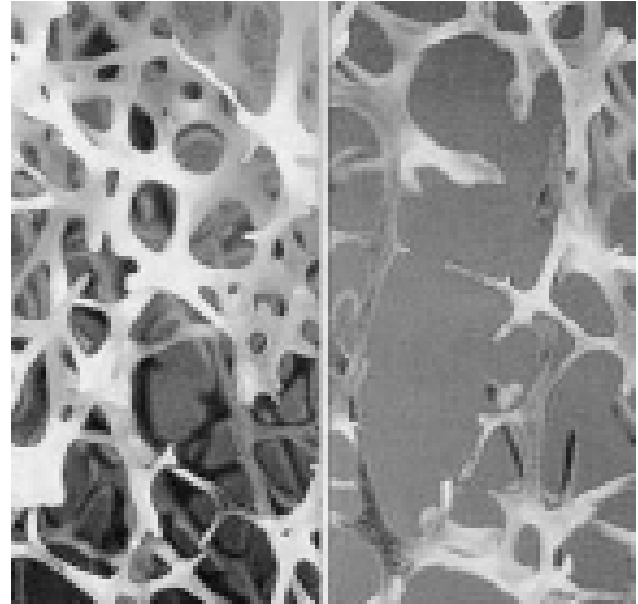
# KRISHGEN BioSystems

## Osteocalcin (1-43/49) Specific ELISA

A one-step quantitative assay specific for human N-terminal & mid-regional osteocalcin

**Most reliable bone formation marker**

**Measure the stable form of osteocalcin**



**Assay Format:** "Sandwich" immunoenzymetric assay using two osteocalcin specific antibodies that detect human osteocalcin (1-49) and (1-43).

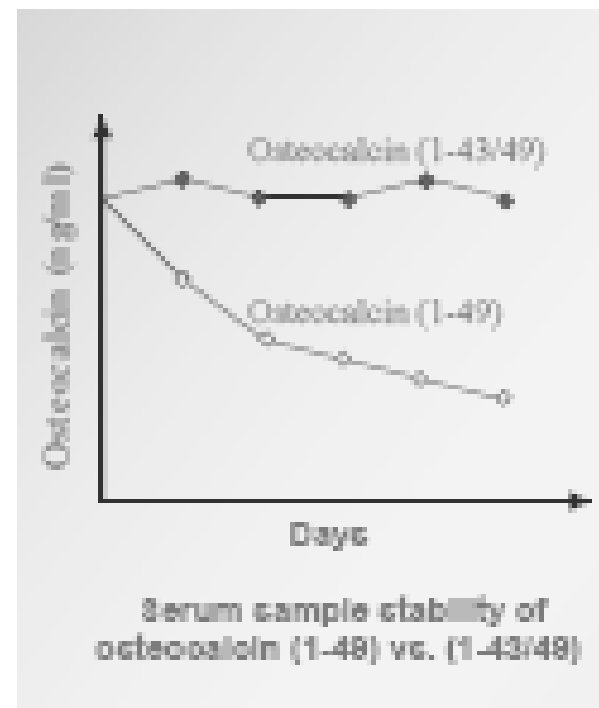
**Patient Sample:** Serum or Plasma

**Sample Volume Required:** 50  $\mu$ l

**Normal Range:** 3.8 – 25 ng/ml

**Assay Incubation:** 1hr / 20 min

**Epitope Diagnostics, Inc,  
USA**



**Sensitive**

**Specific**

**Price Competitive**

Contact Us At -

135/37 Zaveri Bazar, Mumbai 400002. India.

Tel : 022-66372990 Fax: 022-66372991 Email : sales@krishgen.com <http://www.krishgen.com>