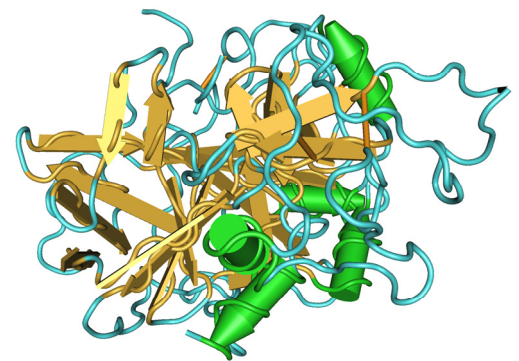


**The only Company having the
entire range of IGFs – IGF1 / IGF2
/ IGFBP1 / IGFBP2 / IGFBP3**

IGF-I serum concentration is the main parameter in growth diagnostics. Critical for correct interpretation of measured IGF-I values is the consideration of age-dependency of IGF-I concentration.

Mediagnost IGF-I ELISA allows the valid determination of IGF-I in human serum. Extensive normal value studies have been conducted, so this test is a valuable tool not only for research but also for clinical diagnostics.



Product Attributes

- High specificity for IGF-I**, cross reactivity with IGF-II < 0.05%
- Sensitivity** of 0.09 ng/ml
- Interassay variance** < 8%
- Correct measurement of IGF-I in non extracted probes**
- Recovery in human serum of 100%**
- Only small volume required - **ideal for pediatric use**

Mediagnost IGF-II RIA reliably detects concentration of IGF-II in serum, cerebrospinal fluid and cell culture supernatants.

Product Attributes

- Cross reactivity to IGF-I < 0.05%
- Sensitivity of 0.1ng/ml
- Inter- and Intra-assay variance < 8%

Marketed in India by

KRISHGEN BioSystems

135/37 Zaveri Bazar, Mumbai 400 002. India.

Tel : 022-66372990 Fax : 022-66372991 Email : sales@krishgen.com

Mediagnost IGFBP-1 EIA (Insulin-like growth factor binding protein-1) determines IGFBP-1 concentration in human serum, amniotic fluid and plasma. IGFBP-1 concentration is an indicator for insulin production of beta-cells and can be used for evaluation of nutritional status.

Product Attributes

No cross reactivity to IGFBP-2, IGFBP-4, IGFBP-5 or IGFBP-6
Inter- and Intraassay variance << 7%
Recovery in human serum: 100%

IGFBP-2 EIA (Insulin-like Growth Factor Binding Protein 2) detects human IGFBP-2 concentration in serum, cell culture supernatants, breast milk and cerebrospinal fluid. Concentration of IGFBP-2 is elevated in several malignant diseases as liver carcinoma, prostate cancer and brain tumor so IGFBP-2 is a possible marker for tumor growth.

Product Attributes

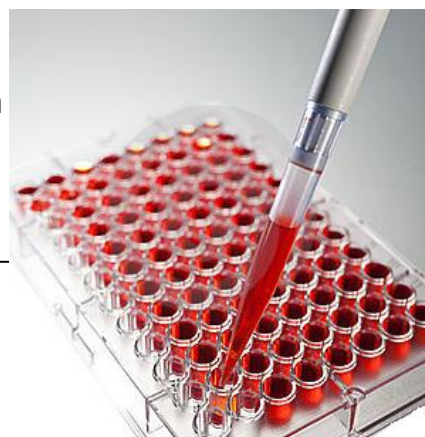
Reference values for healthy humans of a broad range of age
Sensitivity of 0.2 ng/ml
Inter-and Intrassav variance < 10%
Recovery in human serum 97 - 115%

The **IGFBP-3 EIA** (Insulin-like Binding Protein -3) is very well suited for determination of IGFBP-3 concentration in human serum and plasma. Also IGFBP-3 content of other body fluids and cell culture supernatants can be measured.

IGFBP-3 is the one of the key parameters in diagnosis of growth failure. Specially in babies / children the diagnostic value of IGFBP-3 concentration is superior to IGF-I measurement.

Assay characteristics

- only small sample volumes necessary, ideal for pediatrician
 - low variance: 6.3% inter-assay and 4.5% intra-assay variation
 - sensitivity of 0.6 ng/ml
 - linear range from 1:20 - 1:1280 dilution
-



Marketed in India by

KRISHGEN BioSystems

135/37 Zaveri Bazar, Mumbai 400 002. India.

Tel : 022-66372990 Fax : 022-66372991 Email : sales@krishgen.com