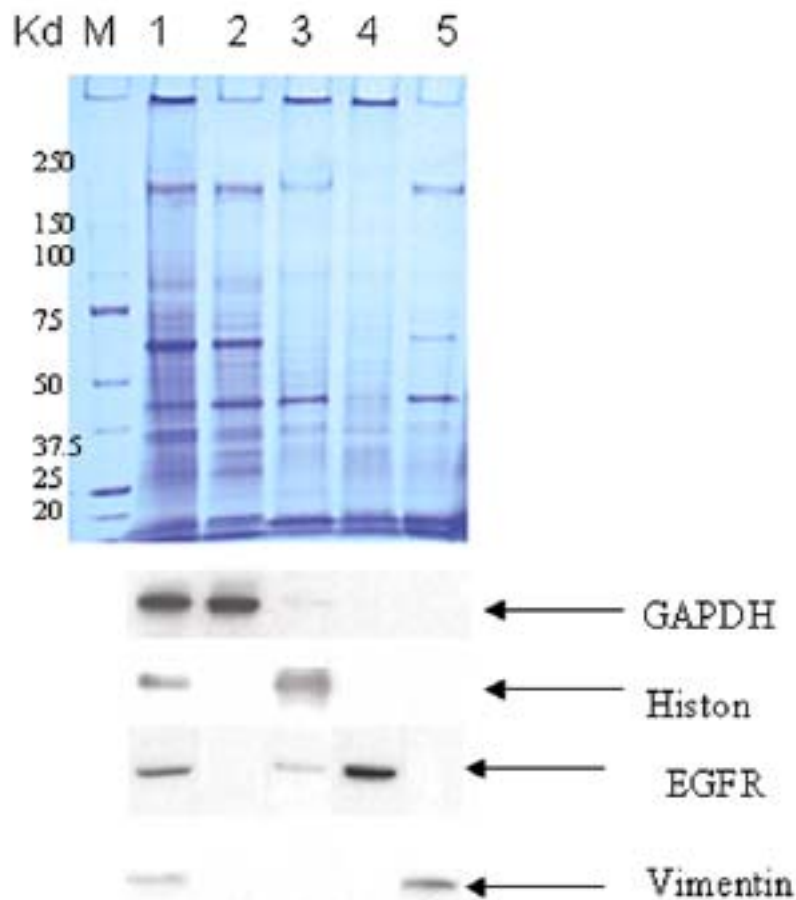


Compartmental Protein Extraction Kit

Simplify and speed up protein extraction



CNMCS Protein Extraction from Mammalian Tissue

Total protein and compartmental proteins extracted from rat colon tissue using BioChain's Total Protein Extraction Kit and CNMCS

Compartmental Protein Extraction Kit were submitted to SDS-PAGE in 5 identical gels. Coomassie staining of one piece of gel indicated distinct protein pattern of respective fractions.

Immunoblotting of PVDF membranes transferred from four other pieces of gel against cytoplasmic marker protein GAPDH, nuclear marker protein Histone H1, membrane marker protein EGFR, and cytoskeleton marker protein vimentin assigned the majorities of the marker proteins to their expected compartmental fractions.

Lane 1: Total Protein; Lane 2: Cytoplasmic Protein; Lane 3: Nuclear Protein; Lane 4: Membrane Protein; Lane 5: Cytoskeleton Protein.

CNM Compartmental Protein Extraction Kit *
CNMCS Compartmental Protein Extraction kit

Reagents are sufficient for extraction of compartmental proteins from 5 g tissues.

*CNM Compartmental protein Extraction Kit has the same features as CNMCS kit except isolating cytoskeleton

BioChain Institute, Inc.

techsupport@biochain.com
www.biochain.com

Marketed in India By :

KRISHGEN BioSystems

135/37 Zaveri Bazar, Mumbai 400002.

Tel : 022-66372990 Marketing Direct : 022-32062085

Fax : 022-66372991 Email : sales@krishgen.com

http://www.krishgen.com