

# KRISHGEN BioSystems



Leading US based company with expertise on extraction / isolation and of analysis of DNA / RNA / Protein from Genomic Tissues

## DNA

Blood and Serum DNA Isolation Kit

Serum DNA Isolation Kit

EZ-Blood DNA 96 Kit

EZ-DNA 96 Kit

FFPE DNA Extraction Kit

Viral Nucleic Acid Release Kit

DNA Extraction Kit

GoldMag Whole Blood Genomic DNA Purification Kit

## RNA

Broad Range Total RNA Isolation Kit

EZ-Blood RNA 96 Kit

EZ-RNA 96 Kit

FFPE RNA Extraction Kit

MicroRNA Isolation Kit

Cartilage RNA Isolation Kit

Easy-mRNA Kit

RNAmate

Total RNA Extraction Kit

xMag mRNA Purification Kit

## Proteins

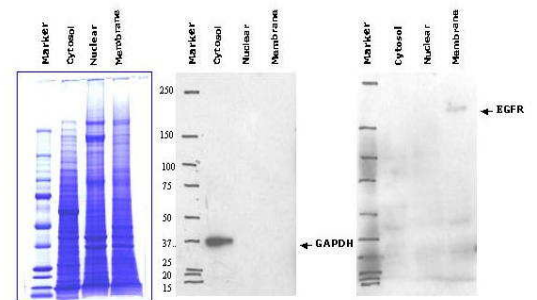
CNM Compartmental Protein Extraction Kit

CNMCS Compartmental Protein Extraction Kit

Membrane Protein Extraction Kit

Total Protein Extraction Kit

Schematic Representation of CNM Extraction of Mammalian Tissues



Compartment proteins extracted from rat colon tissue using CNM Compartment Protein Extraction Kit were submitted to SDS-PAGE in triplication. Commassie staining of one piece of gel indicated distinct protein pattern of respective fractions. Immunoblotting of PVDF membranes transferred from two other pieces of gel against cytoplasmic marker protein GAPDH and membrane marker protein EGFR, assigned more than 90% of the marker proteins to their expected compartment fractions.

## Analysis Products

cDNA Synthesis Kit

DNA Loading Buffer

DNA Methylation

Express Cloning Checker Kit

MicroRNA Detection Kit

FastHyb-Hybridization

In Situ Hybridization Kit

RNA Loading Buffer

RT Checker Kit

Attoglow Western Analysis Kit

AttoglowAdvance Western Analysis Kit

DAB Substrate Kit

FastRed Substrate Kit

ImmunoHistoChemistry Kit

Protein Loading Buffer

Western Blot Enhancing Kit

## Protein Purification

GoldMag Immobilization Starter Kit

GoldMag Particles

Magnetic Separators

Metal-chelating Sepharose

rProtein A-Sepharose

xMag / xMag Protein A Particles

xMag Streptavidin Microparticles

xMag-Lectin Mannose Glycoprotein Kit

xMag-Lectin Total Glycoprotein Kit